

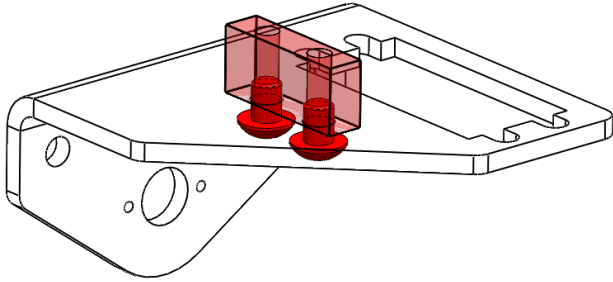
Linear Servo Shifter Assembly/Mount Guide

for

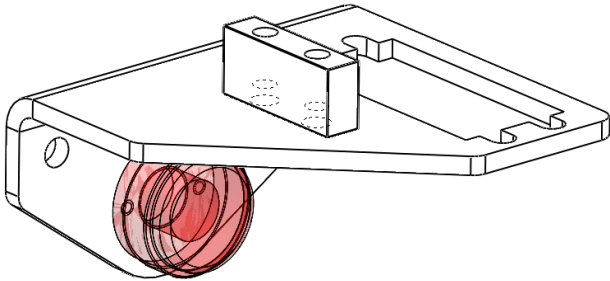
SONIC
SHIFTER
BY ANDYMARK

Linear Servo Assembly/Mount

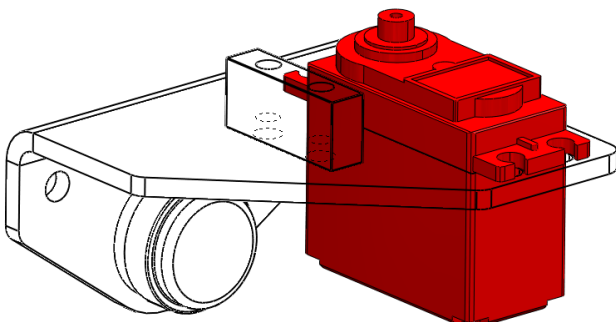
Step 1: Attach the Slide Block to the Servo Bracket using two 10-32 Phillips Head Screws.



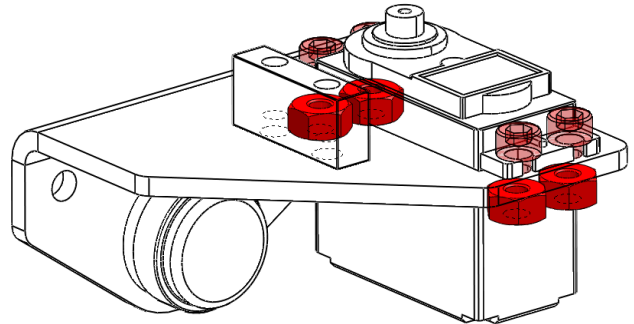
Step 2: Screw the Encoder into place.



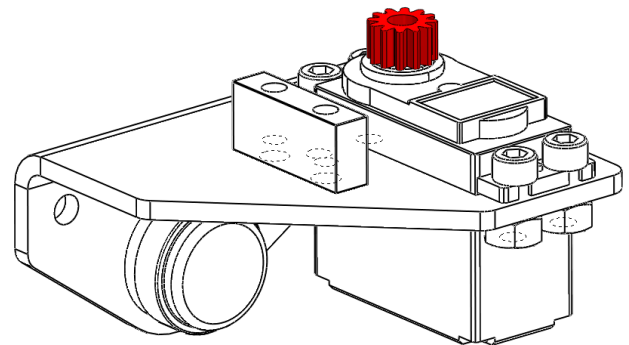
Step 3: Slide the Servo through the servo slot on the Bracket.



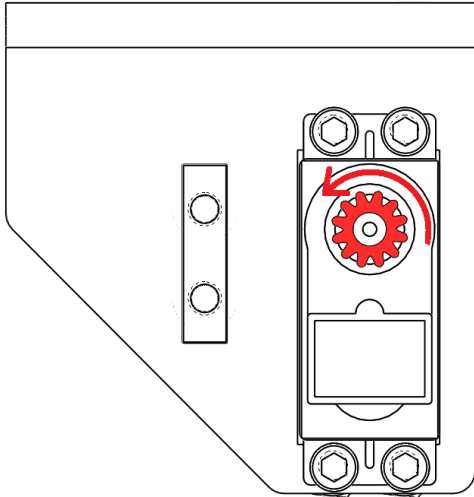
Step 4: Attach and tighten four sets of 8-32 Screws with their respective Nylon Nuts to set the Servo in place.



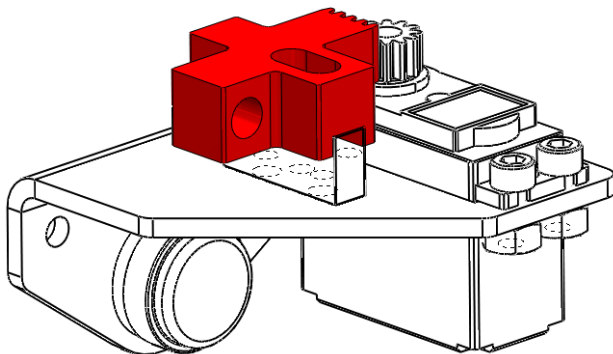
Step 5: Attach and screw on the 12 Tooth Servo Gear onto the Servo.



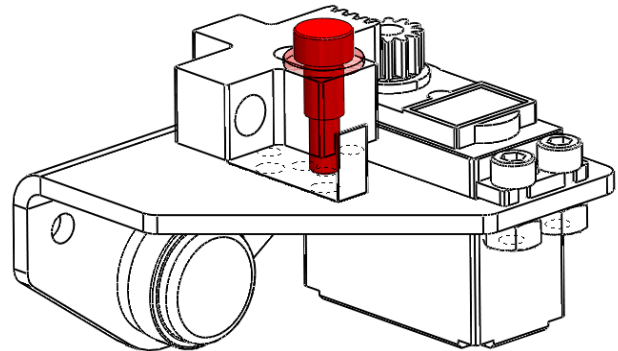
Step 6: Rotate the servo counter-clockwise until it reaches the end of its path.



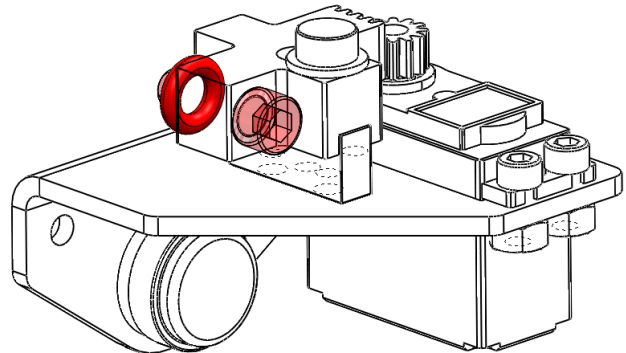
Step 7: Slide and push the Slide Rack onto the Slide Block, rotating the gear while pushing into position.



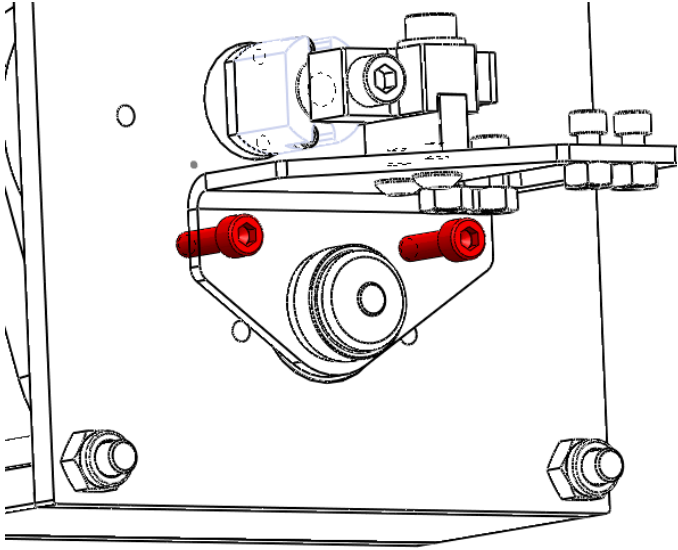
Step 8: Place the washer on Shoulder Screw and screw into Slide Block through the Slide Rack.



Step 9: Slide the 1/4"-28 Screw through the Slide Rack and place the Rubber O-Ring on the other side.



Step 10: Line the Servo Shifter holes up to the Motor Plate and attach using two 10-32 Phillips Head Screws.



Step 11: Screw the 1/4"-28 Screw with the Rubber O-Ring into the Shifter block.

