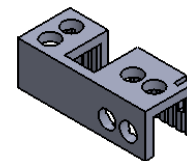
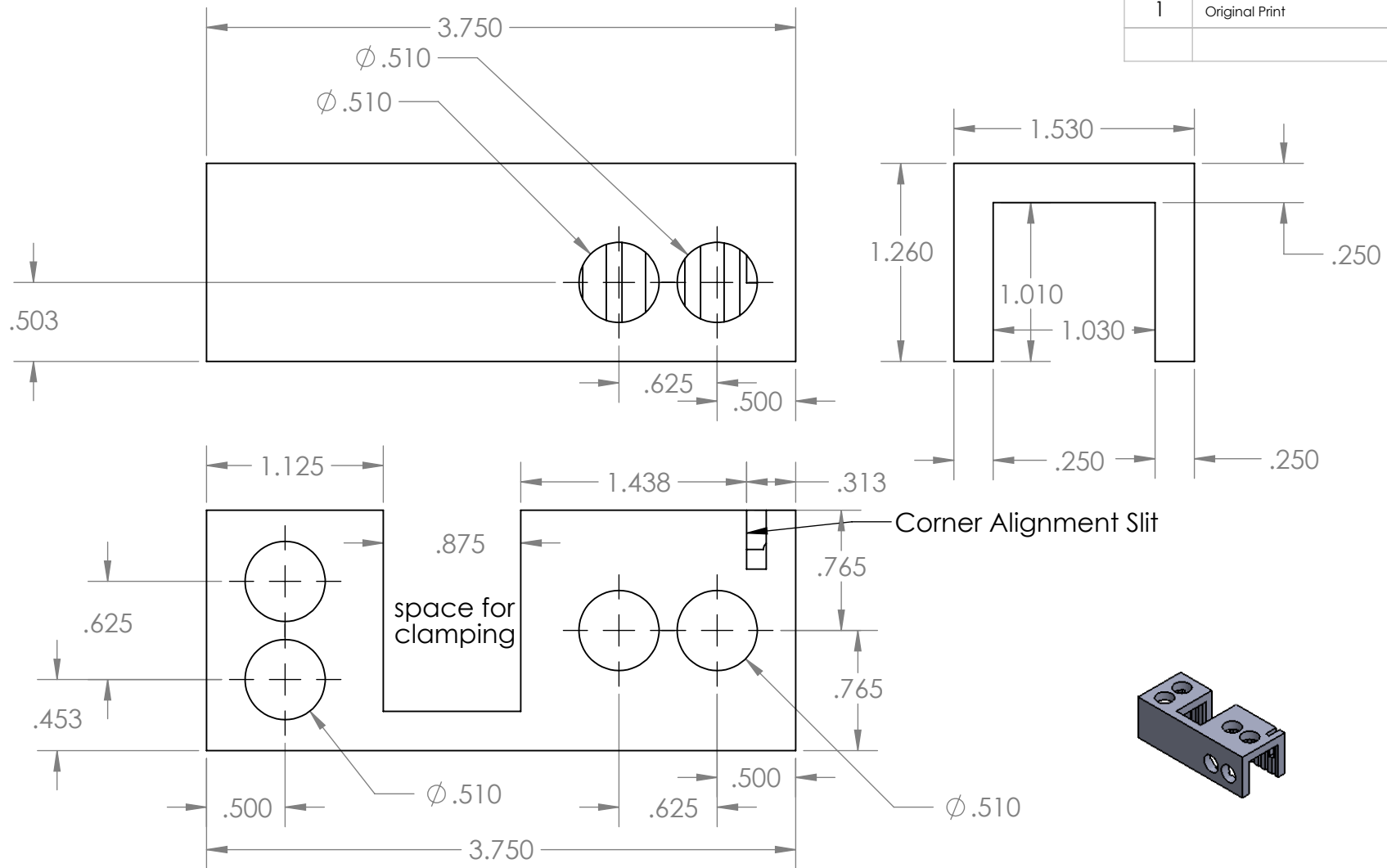



Rev	Discription of Changes
1	Original Print



UNLESS OTHERWISE SPECIFIED:		NAME	DATE			
DIMENSIONS ARE IN INCHES TOLERANCES: FRACTIONAL \pm ANGULAR: MACH \pm BEND $\pm 5^\circ$ TWO PLACE DECIMAL ± 0.010 THREE PLACE DECIMAL ± 0.005		DRAWN	JA			6/23/16
INTERPRET GEOMETRIC TOLERANCING PER:		CHECKED				
MATERIAL		ENG APPR.				
FINISH		MFG APPR.				
3D Printed		Q.A.			SIZE DWG. NO. REV A N/A 1	
DEBURRED		COMMENTS: Dual dimensions are in millimeters				
DO NOT SCALE DRAWING				SCALE: 1:1	WEIGHT:	SHEET 1 OF 1