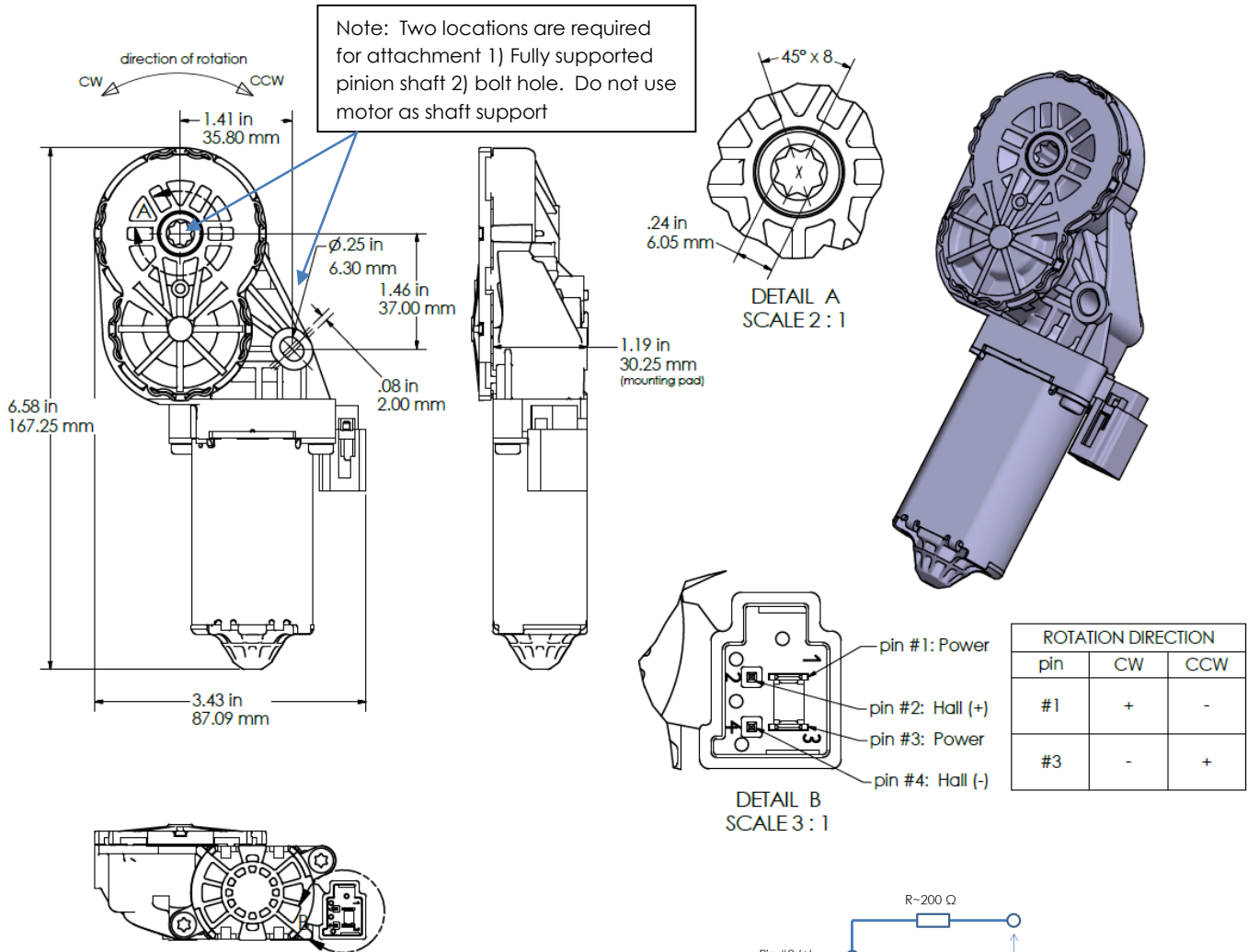


Bosch Seat drive for FRC donation (PN 6 004 RA3 194-06)



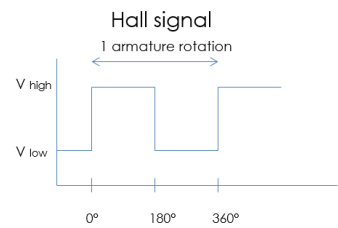
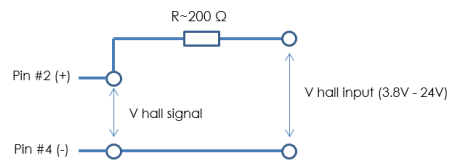
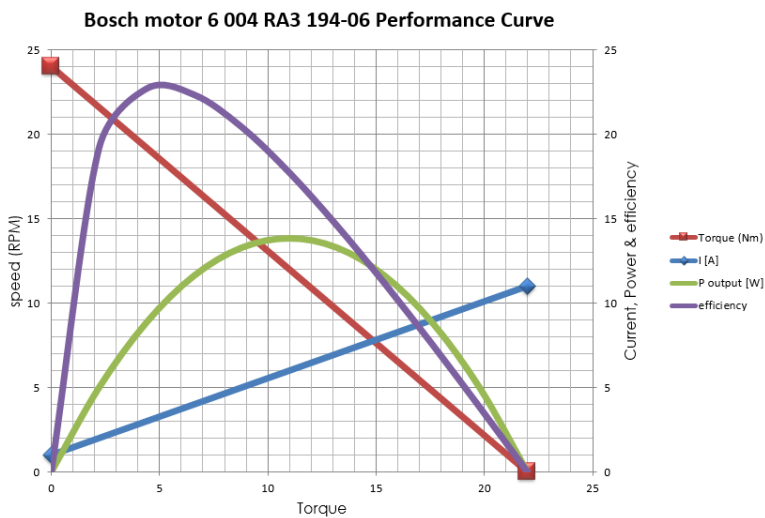
BOSCH

www.bosch.us



Note: Motor is protected with a thermal switch

Performance values at 13V, 0Ω wire resistance



Note: 1 pinion rotation = 174.9 armature rotations

| CRITERIA | VALUE (metric) | VALUE (SAE) |
|---------------------|----------------|-------------|
| No load speed | 24 RPM | |
| Stall Torque | 22 Nm | 16.2 ft-lbs |
| No load current | ≤ 3 A | |
| Max stall current | 12 A | |
| Weight | 363 g | .8 lbs |
| Gear ratio in motor | 174.9:1 | |